



# RMC

YOUR DESTINATION CONNECTION

— COLORADO SPRINGS —



MIKE VINING  
NATIONAL EXPLOSIVE ORDNANCE DISPOSAL MEETING  
SEPTEMBER 22-24, 2020





# RMC COLORADO SPRINGS TEAM



# Colorado Springs Team

*General Manager*  
Kathleen Bates

[kbates@rmcdmc.com](mailto:kbates@rmcdmc.com)  
720-399-4947

*Director of Sales*  
Melanie Donahue

[mdonahue@rmcdmc.com](mailto:mdonahue@rmcdmc.com)  
303-489-9496

*Senior Sales Manager*  
Maxie Lieberman

[mlieberman@rmcdmc.com](mailto:mlieberman@rmcdmc.com)  
303-661-7495

*Operations Manager*  
Stephanie Swanson

[sswanson@rmcdmc.com](mailto:sswanson@rmcdmc.com)  
720-399-4948

*Sales & Operations Coordinator*  
Alison Lynch

[alynch@rmcdmc.com](mailto:alynch@rmcdmc.com)  
970-306-6254

## Executive Team

*Chief Executive Officer*  
Shawn Thomson

[sthomson@rmcdmc.com](mailto:sthomson@rmcdmc.com)  
970-379-9801

*Chief Financial Officer*  
Shaun Groat

[sgroat@rmcdmc.com](mailto:sgroat@rmcdmc.com)  
970-300-5598

*President of Sales and Operations*  
Karen Cantrell

[karen@rmcdmc.com](mailto:karen@rmcdmc.com)  
970-471-6994

*President of Marketing & Creative Development*  
Sarah Carey

[sarah@rmcdmc.com](mailto:sarah@rmcdmc.com)  
435-901-0398

*Chief of Corporate Strategy*  
Paul Menter

[paulmenter@rmcdmc.com](mailto:paulmenter@rmcdmc.com)  
970-274-1068

## TRANSPORTATION + STAFF



# Around Town Transportation

**3 PASSENGER PRIVATE SEDAN**

**5 PASSENGER LUXURY SUV**

**14 PASSENGER DELUXE SPRINTER**

**21 - 32 PASSENGER MINICOACH**

**50 - 55 PASSENGER MOTORCOACH**

## **ALL TRANSFERS INCLUDE:**

Private transportation  
Uniformed Driver  
Driver gratuity  
RMC Coordination

## **NOTES:**

All rates are based on one vehicle  
3 hour minimum required for Sedans and SUVs  
5 hour minimum required for Vans, Sprinters and Coaches  
Based on program size and requirements, additional charges may apply for Nextel Radios, bag meters and staff parking





## RMC Staff

### **AIRPORT AND TRANSFER STAFF:**

Meet & Greet Staff

Dispatch Staff

Hotel Greet Staff

*\*Four hour minimum per staff*

### **HOSPITALITY, DISPATCH, ADVANCE STAFF:**

Hospitality Staff

Program Lead Staff

Dispatch Staff

Advance Staff

Registration Staff

*\*Four hour minimum per staff*

### **TOUR GUIDES:**

Professional Guides

Ride Along Tour Guide

### **ADDITIONAL SERVICES:**

Airport Porterage Services

Language Translators

Departure Notice

### **NOTES:**

All staff require a 30 minute break for every 4 consecutive hours worked

Meet & Greet Services cannot be provided without pre-arranged private transportation



## LEISURE TOURS & EXCURSIONS





# National Museum of World War II Aviation

The Kaija Raven Shook Aeronautical Pavilion is our new 40,000 square ft. facility. It is full of displays and over 12 flyable WWII airplanes in the KRSAP hangar for a total of nearly 30 aircraft on the campus.

## **INCLUSIONS:**

Public, guided tour

Professional tour guide (1:45 guide to guest ratio)

Gratuity and RMC coordination

## **THINGS TO KNOW:**

Based On: 2 hours

Minimum: 20 guests

Maximum: Please Inquire

## **NOTES:**

For a private tour, a minimum of 45 guests is required

Groups larger than 45 guests, will be split into smaller groups

Peak season tours (June 1 – August 15) are conducted every half hour

Off Season tours (August 15 – May 31) are conducted every hour

Round trip transportation is additional

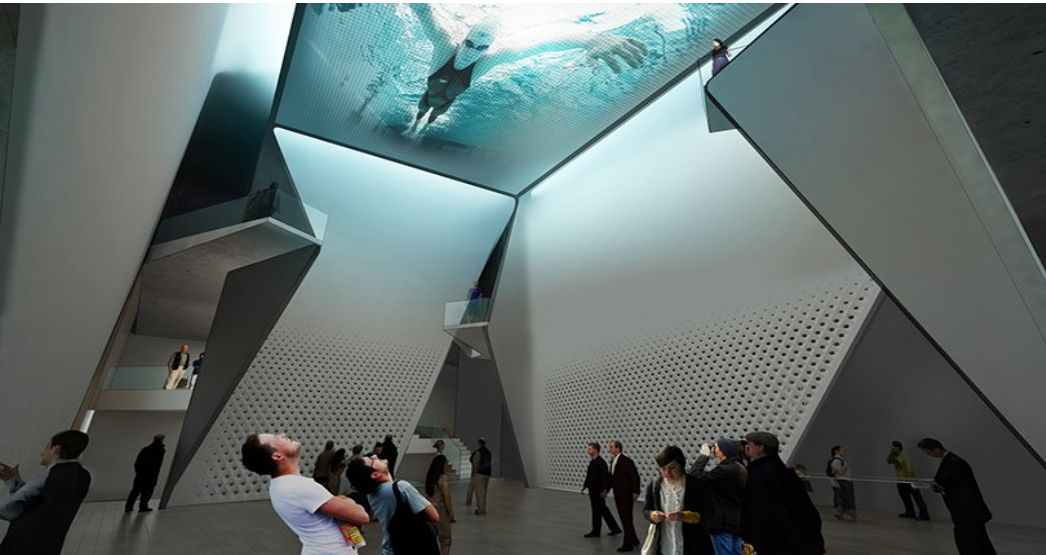




# US Olympic Museum

## PRIVATE GUIDED TOUR

Opening its doors in 2020, the U.S. Olympic Museum and Hall of Fame will be an experience like no other, where the legacies of American Olympians and Paralympians get a well-deserved permanent home. This will be the most accessible and interactive museum in the country, a place where everyone can discover and share in the journeys, struggles and victories of Team USA athletes and relive the Moments That Move You, and all of us, over and over again. The U.S. Olympic Museum will be located where many Olympic and Paralympic dreams begin – at 6,035 feet above sea level, in the shadow of Pikes Peak – just a few blocks away from the United States Olympic Committee headquarters in Colorado Springs.



### INCLUSIONS:

Private or self guided tour

Guide gratuity, tax, and RMC coordination

### THINGS TO KNOW:

Based On: 1 hour tour and unlimited time in Museum

Minimum: 10 guests

Maximum: Based on vehicle size

### NOTES:

Round trip transportation is additional

Season is year round







# Cheyenne Mountain Zoo

WITH ADMISSION TO WILL ROGER SHRINE

## INCLUSIONS:

Admission fee to Will Roger Shrine and Zoo  
Zoo tram ride (*season and weather permitting*)  
Tax and RMC coordination

## THINGS TO KNOW:

Based On: All day access  
Minimum: 10 guests  
Maximum: 200 guests

## NOTES:

Children ages 2 and younger are free of admission  
Visit to the Zoo is a self-guided tour  
Professional tour guides are available for an additional fee; please inquire  
Last admission into the Zoo is at 4:00 PM daily  
Not all animals will be out on exhibit until closing time  
Tram runs from Memorial Day to Labor Day  
Round trip transportation is additional





# Cheyenne Mountain Zoo

WITH ADMISSION TO WILL ROGER SHRINE

Come and experience one of Colorado Springs' biggest attractions, the Cheyenne Mountain Zoo. Guests have the freedom to explore the Zoo at their own leisure. An exhibit that shouldn't be missed is the African Rift Valley. This exhibit spotlights the park's world-renowned giraffe herd- the largest of any zoo in the world! Guests are allowed to hand-feed the giraffes at several feeding stations located throughout the exhibit.

Your Zoo admission includes a drive to the Will Rogers Shrine of the Sun for that day. This historic monument is 1.4 miles up the Russell Tutt Scenic Highway from the Zoo entrance. Built by Spencer Penrose between 1934 and 1937, it stands dedicated to Will Rogers, who died in a plane crash in 1935.

This historic monument is 1.4 miles up the Russell Tutt Scenic Highway from the Zoo entrance. Built by Spencer Penrose between 1934 and 1937, it stands dedicated to Will Rogers, who died in a plane crash in 1935. The elevation of the Will Rogers Shrine is 8,136 feet on the top deck and provides breathtaking views of Colorado Springs, the Pikes Peak Region and Eastern Plains





## Manitou Springs / Old Colorado City Shopping Tour

This tour is perfect for guests who want to leisurely explore and shop their way through the charming towns outside of Colorado Springs. Guests will be given the opportunity to explore both Manitou Springs and Old Colorado City. Both towns feature beautiful art galleries and unique storefronts, which guests are invited to peruse on their own. Tour guides will be on hand to give suggestions on shops and answer questions. This tour also provides admission to Michael Garman's Magic Town in Old Colorado City. Michael Garman is a local sculptor who has been creating his miniature masterpieces for over 50 years. Magic Town is his miniature city, built at 1:6th scale, that combines hundreds of original characters with intricately detailed buildings—sounds effects, trick lighting and mirrored illusions that make entire alleyways disappear right before your eyes!

### INCLUSIONS:

Professional tour guide (*one Guide per vehicle*)  
Shopping time in Manitou Springs  
Shopping time in Old Colorado City  
Admission to Michael Garman's Magic Town  
Tax, gratuity and RMC coordination

### THINGS TO KNOW:

Based On: 2-3 hour tour  
Minimum: 10 guests  
Maximum: Based on vehicle capacity

### NOTES:

Final guide cost based upon actual time with guests; two hour minimum  
Comfortable footwear is recommended  
Shopping is at guests' own expense  
A group lunch can be arranged for an additional fee; please inquire  
Round trip transportation

## ADDITIONAL TOUR OPTIONS





## Glen Eyrie Tour & Tea

Nestled at the foot of majestic Queen's Canyon, the Castle at Glen Eyrie is a charming location for a relaxing afternoon. Guests will be taken on a guided tour of the historic home of General William Jackson Palmer, founder of Colorado Springs. After the tour, a private tea will be served for the group in the Castle's Music Room.

### **INCLUSIONS:**

Professional Tour Guide  
Private tour of the Glen Eyrie Castle  
Private tea time with pre-fixe, 3 course menu and an assortment of teas  
Tax, gratuity and RMC coordination

### **THINGS TO KNOW:**

Based On: 3 hour tour  
Maximum: 16 guest (*per tour*)

### **NOTES:**

16 guest minimum must be met to ensure private tour and tea  
Please inquire for groups larger than 16 guests; additional room fee will apply for tea  
Round trip transportation is additional





# Colorado Springs Food Tour

Explore the tasty and unique local fare in historic downtown Colorado Springs walking tour. This tour will lead your guests to five or six culinary destinations where guests can savor generous samples of food and drink. Hearing directly from restaurant owners, chefs, and managers about their food-driven vision, guests will be entertained by fascinating local history.

## **INCLUSIONS:**

- Knowledgeable tour guide
- Samples from 5 – 6 culinary destinations
- Tax and gratuity
- RMC coordination

## **THINGS TO KNOW:**

- Based On: 3 hours
- Maximum: 12 guests

## **NOTES:**

- Tours are available limited days and times during the week
- Destinations can vary based on the day and time
- Transportation is additional





# Pikes Peak Vehicle Tour

The purple mountain majesties surrounding Colorado Springs are stunning to observe, with Pikes Peak, America's Mountain as the shining jewel in the center of their panoramic crown. Guest will have a docent during their Pikes Peak driving tour!

Once you hit the top of Pikes Peak, you'll be able to explore the summit for 30-40 minutes. Take photos, peek over the rocks and edges and make a stop in the Summit House. Inside are snacks and more filling fare, including burgers, hot dogs and sandwiches. You can also get fresh-made fudge (get extra for the ride back). Since it's usually chilly at the summit, a cup of hot cocoa or coffee can warm you right up, especially paired with Pikes Peak's world-famous fresh and hot donuts. They're made with a special recipe that allows them to be at peak fluffy goodness.

## **INCLUSIONS:**

Knowledgeable tour guide  
Tax, gratuity and RMC coordination

## **THINGS TO KNOW:**

Based On: 4 hours  
Maximum: Based on vehicle

## **NOTES:**

Tours are available limited days and times during the week  
Destinations can vary based on the day and time







# Air Force Academy Tour

Spanning over 30,000 acres, the Air Force Academy is home to over 4,000 Air Force Cadets. Guests will enjoy a guided tour, including a visit to the unique Cadet Chapel and Visitor's Center.

## **INCLUSIONS:**

Professional tour guide  
Gratuity, Tax, and RMC Coordination

## **THINGS TO KNOW:**

Based On: 2-4 hour tour  
Minimum: 15 guests  
Maximum: Please inquire

## **NOTES:**

Year round availability  
Round trip transportation is additional



# Garden of the Gods Tour

Garden of the Gods, with its unusual red rock formations. Guests will learn about the history of the area, its wildlife and vegetation. Add a lunch at the Garden of the Gods Trading Post or the Air Force Academy.

## **INCLUSIONS:**

Professional tour guide  
Gratuity, Tax, and RMC Coordination

## **THINGS TO KNOW:**

Based On: 2-4 hour tour  
Minimum: 15 guests  
Maximum: Please inquire

## **NOTES:**

Year round availability  
Round trip transportation is additional





# Four By Brother Luck Cooking Class

## DUMPLING ROLLIN CLASS WITH WINE PAIRINGS

Join Chef Brother Luck's team in an immersive and interactive journey into the world of dumpling making. Hands on experiences with rolling out dough, filling, and folding a variety of dumplings. Larger groups will be broken into teams and visit each dumpling station in a rotation, spending quality time with our chefs to learn different methods and style. Dumplings will be paired with tastings of wine and sake chosen to elevate with the dishes by our inhouse Sommelier.

### INCLUSIONS:

- Private Chef
- Hands-on class with demonstration
- All supplies and equipment required
- Wine pairing
- Tax, gratuity and RMC coordination

### THINGS TO KNOW:

- Based On: 2 hour event
- Minimum: 6 guests
- Maximum: 60 guests

### NOTES:

- Transportation is additional
- Hors d'oeuvres and cocktail options available
- Additional Alcoholic beverages outside of selected menu are additional and based on consumption
- Season is year round





# Pro Rodeo Hall of Fame

## MUSEUM OF AMERICAN COWBOY TOUR

This is the only museum in the world devoted exclusively to the sport of rodeo and the people who have made it a world-class sporting event. Since 1979, the ProRodeo Hall of Fame has been an educational and entertaining museum designed to preserve the legacy of the cowboy contests, the heritage and culture of those original competitions, and the champions of the past, present and future. Without the continue support of sponsors, members, and rodeo enthusiasts, the Hall wouldn't be able to continue it's legacy.



The experience at the ProRodeo Hall of Fame and Museum of the American Cowboy gives attention to educating the visitor regarding the sport's historical beginning and offers an explanation of what the cowboy contestants must experience to become champions.

Specialty Acts in Rodeo is a new temporary exhibit in the 101 Gallery. It features various trick riders, trick ropers, rodeo clowns, and other specialty acts to help tell the story of this discipline within the sport of professional rodeo. Some of the items on display include Leon Adams' vest and chaps, Whiplash the Cowboy Monkey's saddle, and postcards from Tad Lucas' personal collection.



### **INCLUSIONS:**

Museum admission  
Tax, gratuity and RMC coordination

### **NOTE:**

Round trip transportation is additional

# ALL ABOUT COLORADO SPRINGS



# Why RMC?

RMC is a diverse DMC founded in 1989 in Aspen, CO that has grown to become one of the the largest privately owned DMCs in North America

RMC provides premier event-management services to an eclectic clientele of corporate and incentive groups, associations, and travel and meeting planners

RMC is a Preferred Luxury DMC by  
The Ritz-Carlton    St. Regis    Four Seasons    Montage Resorts

RMC's Recent Awards + Achievements,  
Top 25 DMC's in the World by Special Events Magazine since 2012  
Featured in Forbes Magazine  
Top 100 Women Owned Businesses since 2011  
Colorado Biz Top 100 Women-Owned Companies  
Utah Best of State - Hospitality, Travel & Tourism 2012, 2013, 2014, 2015, 2017, 2018  
Colorado Biz Best of Colorado 2018 - Best Event Planning Service  
2018 Mile High Energy Award Winner  
2018 Colorado Biz Top Company Finalist  
Special Events Magazine's Top 25 DMCs in the World  
7 DMCP's strong company wide  
ADME Certified

*"On behalf of Coldwell Banker and the Coldwell Banker franchisees attending the Coldwell Banker Chairman's Circle, our hats are off to your hospitality and attention to detail. We personally appreciate your outstanding management of some very challenging program requirements.....you made our jobs so much easier."*  
**- Paula Young, Coldwell Banker Real Estate LLC**

*"Over the last 12 years I have grown to rely on RMC when planning meetings and events in Colorado. The creativity, service and quality of options you provide are excellent and your team knew exactly what we could eliminate without jeopardizing the quality and integrity of the event. Your team's responsiveness, professionalism and availability were awesome and that is something we look for in a partner."*  
**- Jennifer Pace, Ingram Micro**



**RMC**

# Where is RMC?

## ACCOUNTING OFFICE

P. 970-920-1465  
F. 970-920-1466  
110 Midland Ave.  
Basalt, Colorado 81621

## ASPEN & SNOWMASS3395

P. 970-920-9800  
110 Midland Ave.  
Basalt, Colorado 81621

## AUSTIN

P. 512-960-2952  
2901 Bee Cave Rd, Box O  
Austin, Texas 78746

## COASTAL CAROLINA & GEORGIA

P. 843-310-2032  
6 Shults Road  
Bluffton, South Carolina 29910  
*Note:*  
*Hilton Head and Bluffton, SC and Savannah, GA are serviced by the Coastal Carolina & Georgia office*

## DENVER & COLORADO SPRINGS

P. 303-292-9600  
2520 Galena Street, Unit C5  
Aurora, Colorado 80010

## JACKSON HOLE

P. 307-734-0599  
N Pines Way, Suite 104  
Wilson, Wyoming 83014

## LAKE TAHOE & RENO

P. 775-548-0707  
9705 State Route 267, STE 6  
Truckee, CA 96161

## LOS CABOS

P. USA 970-427-4350  
P. MX 52 1+ 624-142-3434  
Blvd. Paseo San Jose SN,  
Plaza del Pescador, Local M1  
Zona Hotelera San Jose del Cabo, 23405  
San Jose Del Cabo, B.C.S.  
Mexico

## NAPA & SONOMA

P. 707-492-5172  
1426 Fourth Street  
Napa, California 94559

## PARK CITY & SALT LAKE CITY

P. 435-615-7228  
1762-A Prospector Avenue  
Park City, Utah 84060

## VAIL & BEAVER CREEK

P. 970-766-0040  
*Main Office:*  
0069 Edwards Access Road, #3  
Edwards, Colorado 81632  
*Mailing Address:*  
Post Office Box 1466  
Edwards, Colorado 81632  
*Note:*  
*Breckenridge, Copper Mountain, Keystone and Steamboat Springs, Colorado are serviced by the Vail office*





## RMC Details

### PRICING

Proposal pricing is estimated and subject to change until contract is signed. Estimated pricing is valid for 30 days from the proposal date.

### PAYMENTS

All deposits, payments and dates will be clearly outlined on your contract and deposit billing invoices.

### VENUES

All venues presented within this proposal are suggested and will be confirmed upon request of client.

### PROPRIETARY INFORMATION

All concepts, themes, and ideas presented in this proposal are property of RMC and are not allowed to be utilized outside of working with RMC.

### ADMINISTRATIVE MANAGEMENT

RMC charges a 6% Administrative Management fee to defray costs of accounting and reconciliation associated with tracking and monitoring the financial activity of each program from the initial contract through program execution and final closeout. As the time and effort associated with these activities tends to be proportional to the relative size and complexity of each program, RMC charges this fee as a percentage of the total invoice amount.



Copyright 2019 Rocky Mountain Connections, Inc. (RMC). All rights reserved. No part of this document may be reproduced, stored in a retrieval system or transmitted in any form by any means electronic, mechanical, photocopying, recording or otherwise, without the prior written permission of RMC, Inc.

THANK YOU!